

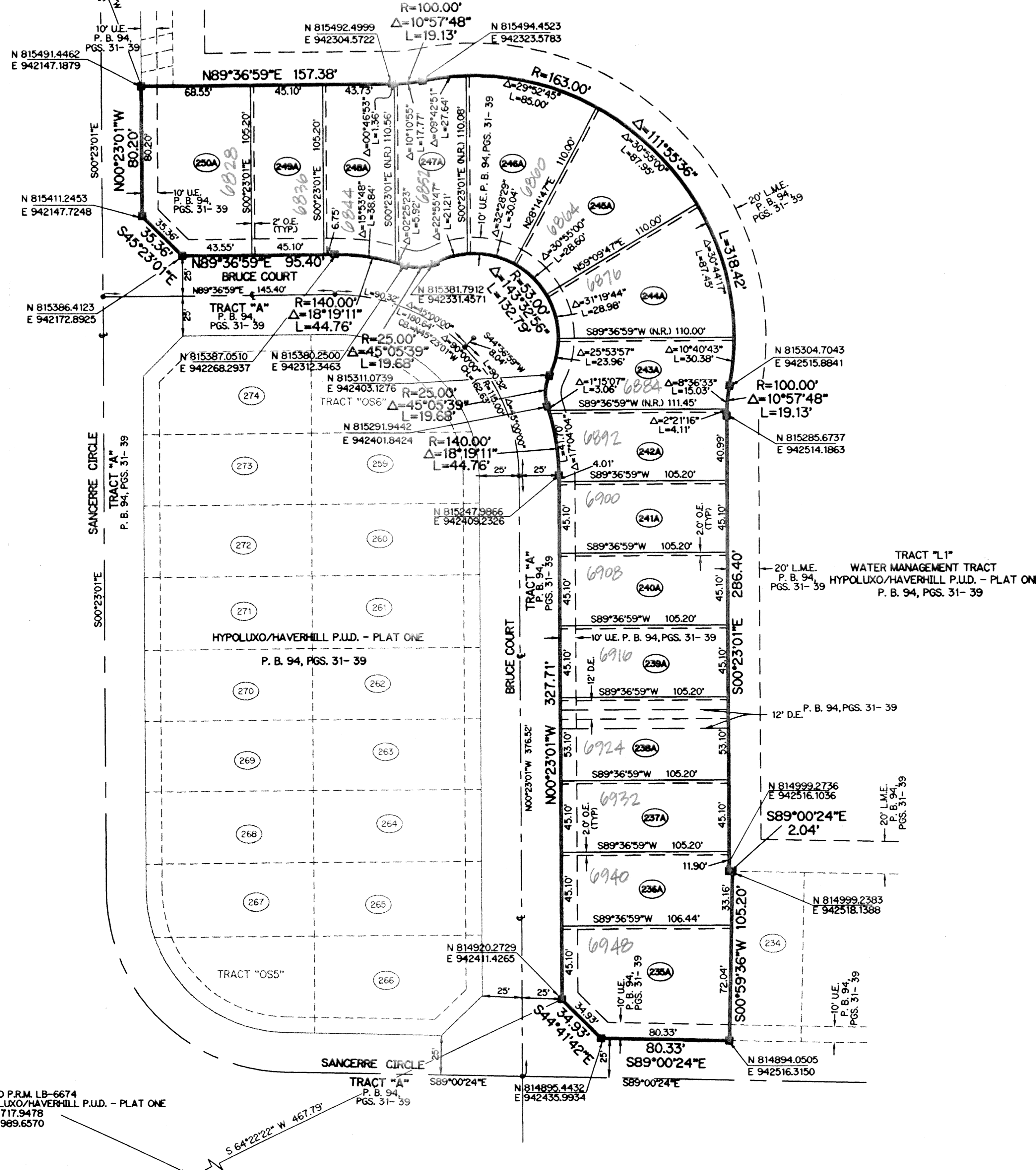
PLANNED UNIT DEVELOPMENT

# HYPOLUXO/HAVERHILL P.U.D. - PLAT ONE REPLAT

BEING A REPLAT OF LOTS 235 THROUGH 250, HYPOLUXO/HAVERHILL P.U.D. - PLAT ONE, AS RECORDED IN PLAT BOOK 94, PAGES 31 THROUGH 39, INCLUSIVE, ALL OF THE PUBLIC RECORDS OF PALM BEACH COUNTY, FLORIDA, LYING IN SECTION 2, TOWNSHIP 45 SOUTH, RANGE 42 EAST, PALM BEACH COUNTY, FLORIDA. SHEET 2 OF 2 MAY, 2002

FOUND P.R.M. LB-6674  
HYPOLUXO/HAVERHILL P.U.D. - PLAT ONE  
N 815935.5075  
E 941981.5058

TRACT "L1"  
WATER MANAGEMENT TRACT  
HYPOLUXO/HAVERHILL P.U.D. - PLAT ONE  
P. B. 94, PGS. 31-39,



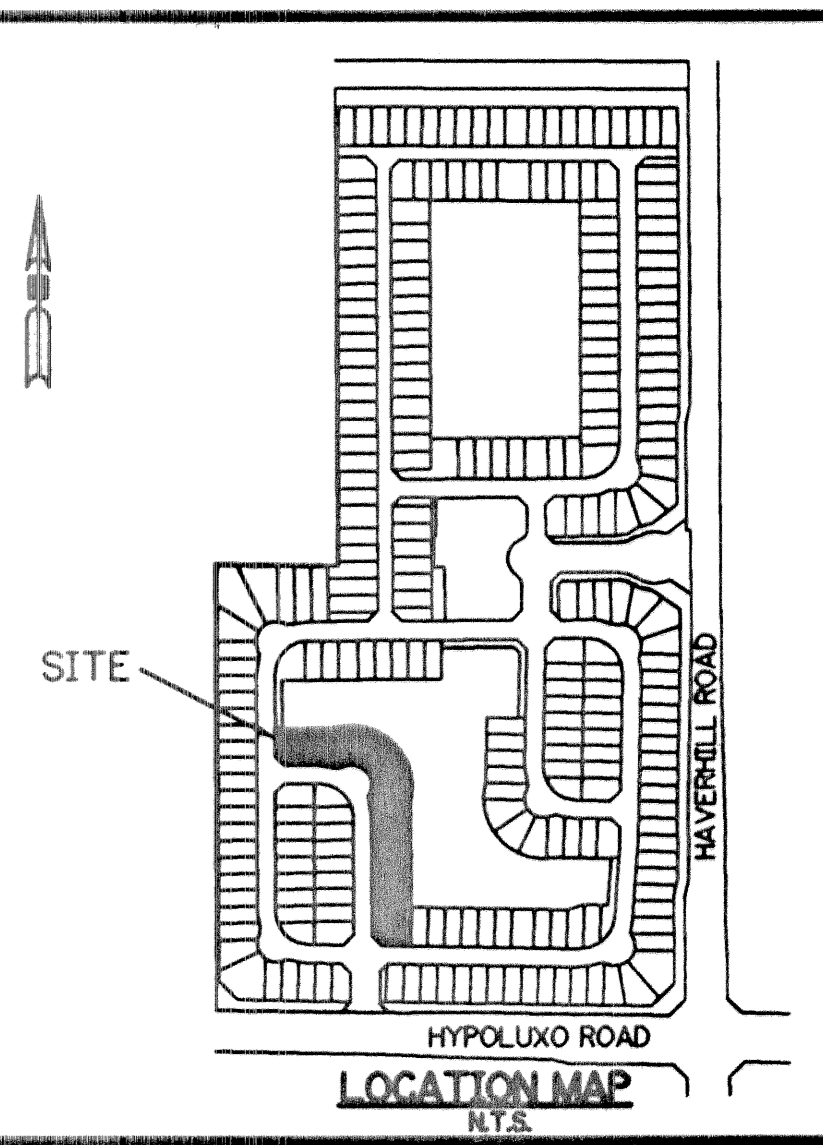
**NOTE:**

COORDINATES SHOWN ARE GRID COORDINATES  
DATUM = NAD 83 (1990 ADJUSTMENT)  
ZONE = FLORIDA EAST ZONE  
LINEAR UNIT = U.S. SURVEY FEET  
COORDINATE SYSTEM 1983 STATE PLANE  
TRANSVERSE MERCATOR PROJECTION  
ALL DISTANCES ARE GROUND  
SCALE FACTOR = 1.00004481  
NO ROTATION: PLAT BEARING = GRID BEARING

**LEGEND:**

- - SET PERMANENT REFERENCE MONUMENT, LB-6674
- - PERMANENT CONTROL POINT, LB-6674
- Δ - DELTA ANGLE
- B.E. - BUFFER EASEMENT
- C. - CENTERLINE
- C.B. - CHORD BEARING
- C.H. - CHORD LENGTH
- D.B. - DEED BOOK
- D.E. - DRAINAGE EASEMENT
- L. - ARC LENGTH
- L.A.E. - LIMITED ACCESS EASEMENT
- L.M.A.E. - LAKE MAINTENANCE ACCESS EASEMENT
- L.M.E. - LAKE MAINTENANCE EASEMENT
- L.W.D.D. - LAKE WORTH DRAINAGE DISTRICT
- N.R. - NOT RADIAL
- N.T.S. - NOT TO SCALE
- O.R.B. - OFFICIAL RECORD BOOK
- P.B. - PLAT BOOK
- PGS. - PAGES
- P.S.M. - PROFESSIONAL SURVEYOR AND MAPPER
- R. - RADIUS
- R/W. - RIGHT-OF-WAY
- S.T. - SURVEY TIE
- U.E. - UTILITY EASEMENT
- O.E. - OVERHANG EASEMENT
- N 814602.8637  
E 795753.1680 - DENOTES STATE PLANE COORDINATES

THIS INSTRUMENT PREPARED BY  
WILBUR F. DIVINE, P.S.M. 4190, STATE OF FLORIDA  
LAWSON, NOBLE AND WEBB, INC., LB-6674  
ENGINEERS PLANNERS SURVEYORS  
420 COLUMBIA DRIVE, SUITE 110  
WEST PALM BEACH, FLORIDA



SUBDIVISION HYPOLUXO/HAVERHILL P.U.D. REPLAT  
BOOK 94  
PAGE 62  
FLOOD ZONE B  
FLOOD MAP # 175 B  
QUAD # 34  
ZONING PUD  
SE  
ZIP CODE 33463  
TAZ 424  
PUD NAME HYPOLUXO/HAVERHILL

FOUND P.R.M. LB-6674  
HYPOLUXO/HAVERHILL P.U.D. - PLAT ONE  
N 814717.9478  
E 941989.6570